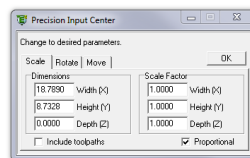
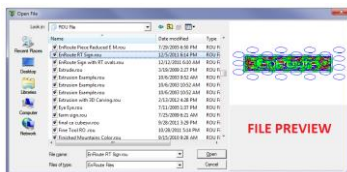


If you own EnRoute 3, it's time to unlock the power of your CNC machine.

With another new Microsoft operating system coming out, there has never been a better time to upgrade your EnRoute 3 software to EnRoute 5. Here are some of the new features you will enjoy in addition to better Windows' operating system support. (We wanted to make it a short document but there are just too many new features and improvements.....sorry!)

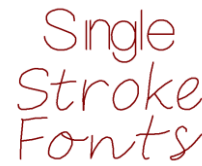
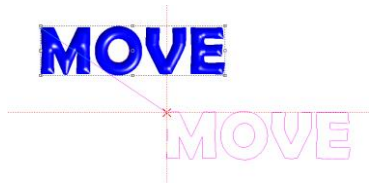
NOTE: Not all of the items below are in every version. The items listed below will only be relevant to the product level of EnRoute that you have. In addition to the items listed here, there have been many bug fixes and improvements for various issues.



EnRoute Interface and Preferences

We are always looking for ways to make things work better and more efficiently. To help with this, a few things have been added to the preferences and some other general changes have been made.

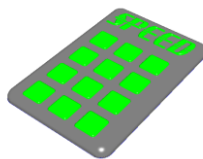
- Mouse Scroll Wheel Zooms to Cursor
- Start Point Preference
- Global Ordering Preference
- Dimension Tool Settings Preference
- New Security System (Supports Windows 7 and 8)
- Relief Preference for shading and Toolpath tolerance
- New Interface for Drawing Tools to move settings to bottom of page
- Solutions Menu
- More than one sheet size per file
- ROU file Preview
- Import ROU to current File



Design Tools

EnRoute 5 has a whole new design interface for 2D drawing. There is a contour preview to show you how things will look before you apply them and all of the settings for a particular drawing tool appear at the bottom of the page in a dialog box and not in the work space. Here is a complete list of drawing tools improvements:

- New Drawing Tools -Rectangle, Circle, Ellipse, Polyline with precise arc and line
- New Move Tool
- New and Improved Snap Functions
- New and Improved Mirror Command
- New Rotate Functions
- New Contour Distortion Tools
- New Point Editing Capabilities - Smooth, Linearize & Corners
- Improved Fillet Tool
- Improved Trim and Extend
- Preview Multicopy
- New Offset/Partial Offset Tool
- Extend Arc as Arc or Line
- Merge Selection to Right Click menu
- Parametric Shapewizard shapes (foldup boxes and basic shapes)
- Import Gcode to Vector
- Thread Milling Wizard for CNC made nuts and bolts
- Boxster Cabinet Macro
- New Text Tool with Text on Arc/Path
- 3 Single Stroke Fonts
- Text to Braille Conversion
- Dimension and Measure Tool



EnRoute Toolpathing

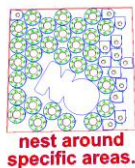
EnRoute 5 has some new toolpathing capabilities to help with manufacturing efficiency and have some capabilities that allow for creative applications. The toolpathing improvements include:

- Fine Tool for Routing Offset
- Channel Tag for Island/Hatch Fill
- Standard Tool Compensation
- Daisy Chain Cutting (no lift)

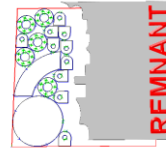
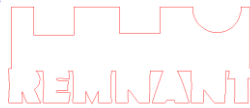
EnRoute Toolpathing con't

- Spiral Fill
- Toolpath Distortion - X/Y and Z axis
- Save Edited Bridge Positions
- Save Edited Start Point Position
- More types of Bridges
- Backplot Solution for GCode Viewing
- 180 Deg Entry Exit on Open Contour
- Improved Aggregate/Horizontal Cutting Support
- Support for Horizontal Drilling with Drill Bank
- Sharp Corners on External Engrave and Routing offset
- Bridge on Open Contour
- Feedrate Calculator Solution
- Better Open GL Toolpath Simulation
- Negative Entry Exit overlap to keep part attached to sheet

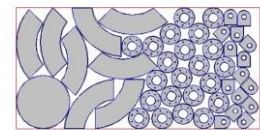
**NESTING
NESTING
NESTING**



The Remnant is converted to a plate.



.5 Aluminum 1



Sheet Data

EnRoute Nesting

EnRoute's new nesting capabilities will allow you to produce better nesting efficiency, allow you to avoid areas on sheets that you don't want to cut in, create remnants of leftover plates and easily create multiples of different parts. Nesting is one of the areas with the best improvements. Nesting options include:

- New All in One Nesting Interface
- 3 Nesting Algorithms
- Copy Nesting
- Nesting by Priority
- Block Nesting
- Common Line Cutting
- Nesting Report
- Nesting around Obstructions
- Create Remnant
- Turn Remnant to Plate
- Nest to Center of Plate
- Dynamic Nesting (Manual Nesting Tool)
- Engrave – Follow Contour
- Negative Margins Allowed for Max Yield

AutoToolpath (ATP)

EnRoute's ATP has had several new improvements for people who are outputting files without a design application. EnRoute's ATP continues to be an impressive Toolpath engine.



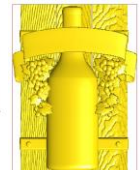
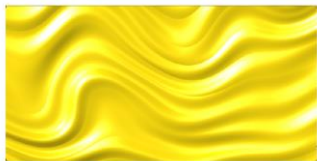
- Cut List Creator Solution
- Single Part Processing for Point to Point
- More DXF Options
- Improved Label Printing
- More Supported Applications
- New Printed Sheet Layout



3D Relief & Surfacing

EnRoute's 3D Surfacing has received a lot of attention over the last few years and there have been some very nice improvements made. Some of the 3D surface editing tools will help to produce amazing results. Here are the new 3D Relief/Surface tools:

- Parametric Textures
- New Relief Slicing
- New Relief Editing Touch Up Tool
- Relief Offset
- Position Bottom of Relief to Z Zero
- Combine (Weld) Reliefs
- Improved Relief Rendering
- Works better with 3D Mesh Objects
- Direct STL to Relief Import Added
- Relief to Greyscale Bitmap Export
- EnRoute Pro Design Station Available



Rapid Texture

This is a new capability that is so impressive it gets its own section. Rapid Texture will create 3D textures for signs, 3D projects and decorative panels with an array of impressive capabilities. Rapid Texture can create an endless amount of different textures that cut is less time that traditional textures. Here are the Rapid Texture capabilities:

(Note: To learn more about Rapid Texture and how it works, visit our [Webinar Page and click Rapid Texture.](#))

- Based on any shape(s)
- Clip to Contours
- Rapid Picture (Picture done with Rapid Texture)
- Texture Fade in and Out
- Rows and Columns for large job or decorative effect
- Symmetric repeatable parts for large jobs
- Easily Include Text, Graphics and Logos via inlay or pocket
- Include 3D Relief as part of texture
- Toolpath Relief using Rapid Texture
- Simulate Hand Hewn Look
- Random line displacement or all in one wave
- Up and Down Wave Patterns

www.enroutesoftware.com