

# 5

# ENROUTE FEATURE FACTS

01

**ENROUTE THINKS LIKE YOUR ROUTER!** Why? Because it was designed as a 3-Axis router software from the ground up!

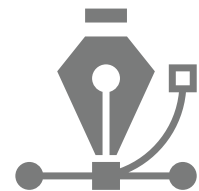


**EASY TO USE DESIGN TOOLS!** Why? EnRoute blends characteristics of both CAD and Drawing programs striking a perfect balance!

02

03

**VECTORIZE TO TOOLPATH TO FINISHED PART!** Why? We are the best in the business and EnRoute is fast and accurate. Set Templates and do this in a few clicks.



**WE RULE WHEN IT COMES TO 3D TEXTURE!** Choose Parametric Texture, Rapid Texture/Picture, Bitmaps or combine all three to create your design.

04

05

**MAKE NOISE WHEN DESIGNING.** Introduce noise distortion to virtually any object in EnRoute like Contours, Toolpaths, Reliefs and Meshes. Create finished parts that looked like they weren't done on a machine.

